

For industrial applications
Toraysee® PK

Features

High wiping performance

Randomly configured micro fibers contact the surface to take dirt into the cloth. It displays high performance under various conditions. Especially, this type is most suitable to wiping off dirt of high viscosity.

High lint-free performance

The end of cloth of 100% filament is fusion-cut and the cloth raises little dust. Product for clean room use is cleaned with ultra pure water and packaged in the clean room to reduce particles and metallic ions.

**Solvent absorbing rate
Fluid absorbing rate**

The hydrophilic micro fibers of nylon composite absorb solvent and water quickly by capillarity. It is suitable to wet-cleaning.

Fluid holding capacity

The voluminous type of knitted structure is excellent in the fluid holding capacity. It is suitable to wiping off much fluid.

Chemical resistance

This type can be used with general solvents.

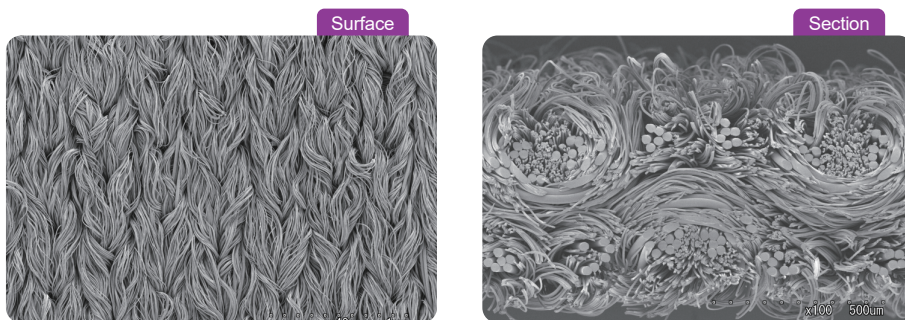
High performance Cleaning Cloth

Toraysee® PK

c l e a n i n g c l o t h

Toraysee® PK is a cleaning cloth for industrial applications of high density knitted type using TORAY polyester/nylon composite micro fiber of approx. 5 μm in diameter single filament fineness.

SEM photograph



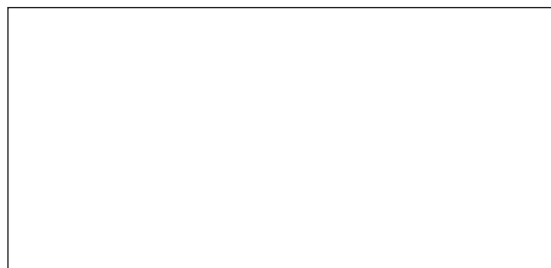
Structure

Material	Construction	Weight	Thickness
Polyester82% Nylon18%	knit	190 g / m ²	0.6mm

Specifications

Use classifications	Item No.	Specification				Delivery lot
		Cut size (cm)	Cut method	Ultra pure water cleaning	Packaging	
For clean room use	PK23H-GCP	23×23	Fusion cutting	Yes	50pieces×2bags /Double package	100 pieces

*1 Cloth for clean room use is packaged in a Class 100 clean room after ultra pure water cleaning. Cloth for general environment use is packaged in the general environment without ultra pure water cleaning. *2 Data in this material are not guaranteed values but JIS values or our test results according to JIS. Customers should check this product for safety and adaptability before use. *3 For further product information, please contact the below. *4 Orders for special sizes and roll type cloth will be accepted separately. Please contact us.



Manufactured and marketed by
TORAYSEE Sales &
Marketing Department,
Toray Industries, Inc.
Nihonbashi Muromachi 2-1-1, Chuo-ku,
Tokyo, Japan 103-8666
Tel. +81-3-3245-5993
Fax. +81-3-3245-5279
www.toraysee.toray/en